



WONDFO BIOTECH
WeAreWorkingForYour **Health**

AMH

Anti-Müllerian hormone

Finecare[™]

AMH Rapid Quantitative Test

AMH is an indicator for directly assessing
ovarian reserve function !

Wondfo

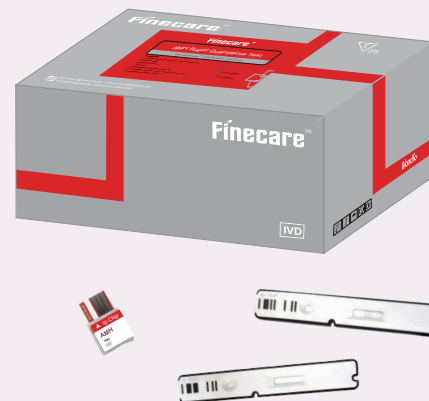
Guangzhou Wondfo Biotech Co., Ltd.
No. 8 Lizhishan Road, Science City,
Luogang District, 510663 Guangzhou, P.R.China
Tel: (+86) 400-830-8768
Website: en.wondfo.com.cn
E-mail: sales@wondfo.com.cn



Rev. A1 Rel.: 2022/07/15

AMH Rapid Quantitative Test

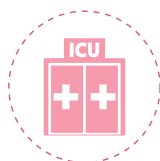
- ✓ Help assessing ovarian reserve function
- ✓ Room temperature storage up to 24 months
- ✓ Instant results in 15 minutes



CLINICAL APPLICATION

- Prediction and evaluation of ovarian reserve function
- Auxiliary diagnosis of related diseases (PCOS, POI, etc.)
- Assist evaluation in reproductive technology (IVF)

APPLICATION SCENARIOS



Point of Care
(GP, Doctor's Office, Clinics)



Reproductive
medical center



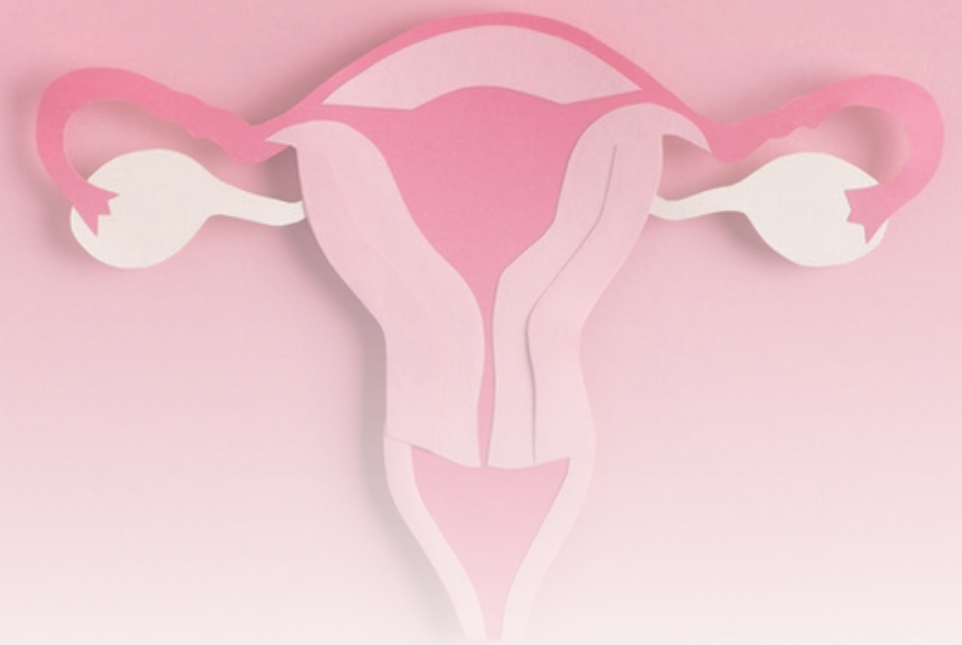
Gynaecology and
Obstetrics



Endocrinology



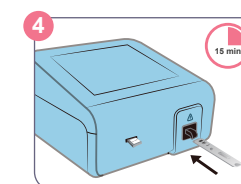
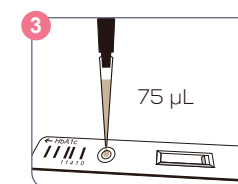
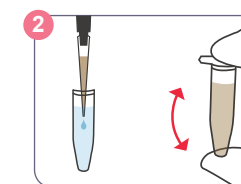
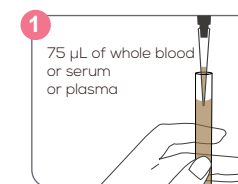
Laboratory



ITEMS SPECIFICATION

Item	Catalog No.	Sample Type	Sample Volume	Loading Volume	Reaction Time	Detection Range	Storage
AMH	W257P0001	Whole blood/ Serum/Plasma	75 µL	75 µL	15 minutes	0.1-16 ng/mL	4~30°C for 24 months

TEST PROCEDURE



5 | Result Display Results: **AMH 6.5 ng/mL**
Reference range:

Gender	Age (years old)	Reference interval (ng/mL)
Adult Male	—	0.92-13.89
	Female	0.88-10.35
Female	20-29	0.88-10.35
	30-39	0.31-7.86
	40-50	≤5.07

ADAPTATION INSTRUMENTS

1. Finecare™ FIA Meter Plus (FS-113)
2. Finecare™ II Plus SE (FS-114)
3. Finecare™ III Plus (FS-205)

