

TEST ITEMS

Basic blood-gas	Haematology	Electrolyte	Biochemistry
pH, pCO ₂ , pO ₂	Hct	K ⁺ , Na ⁺ , Ca ⁺⁺ , Cl ⁻	Glu, Lac

CALCULATION PARAMETERS

Total 23 Parameters:

cH⁺, cH⁺(T), pH(T), pCO₂(T), pO₂(T), HCO₃⁻atd, HCO₃⁻std, BB(B), BE(B),BE(ecf), ct CO₂, Ca⁺⁺(7.4), AnGap, tHb(est), sO₂(est), pO₂(A-a), pO₂(A-a)(T), pO₂(a/A), pO₂(a/A)(T), RI, RI(T), pO₂/FI O₂, pO₂(T)/FI O₂

TEST PACKAGES

Test Item	Cat No.	W459	W460	W461	W462	W463	W464	W465	W466
pH		•			•	•	•	•	•
pCO ₂		•			•	•	•	•	•
pO ₂		•			•	•	•	•	•
K ⁺			•	•	•	•	•	•	•
Na ⁺			•	•	•	•	•	•	•
Ca ⁺⁺				•			•	•	•
Cl ⁻			•	•	•	•		•	•
Hct					•	•	•	•	•
Glu									•
Lac									•



BGA-101

Blood Gas Analyzer

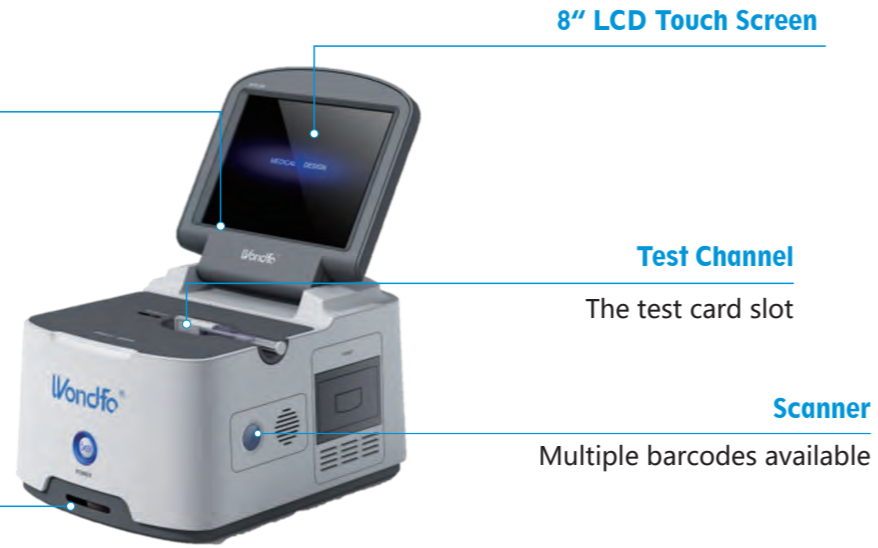
- Reliable
- Portable
- Accurate
- Efficient

BLOOD GAS ANALYZER



BGA-101

- 302x226x180mm
- Weight 6.5kg (Including Battery)



Indicating Light

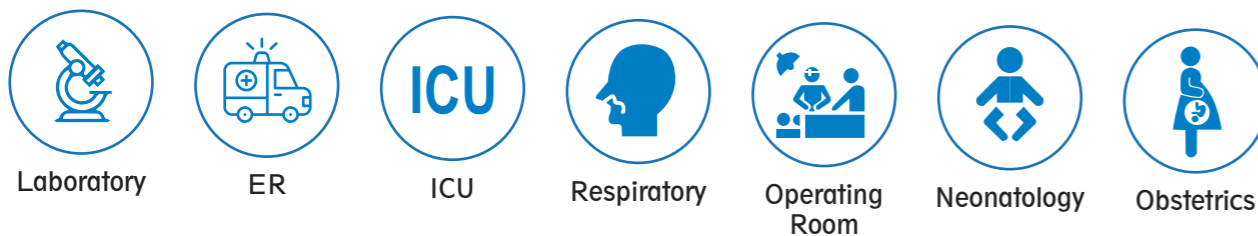
Indicate the remaining power and charging



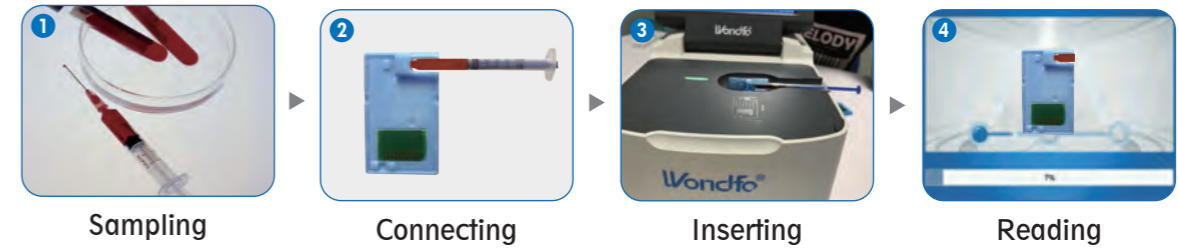
Communication Interface

Ethernet, RS 232, USB, LIS

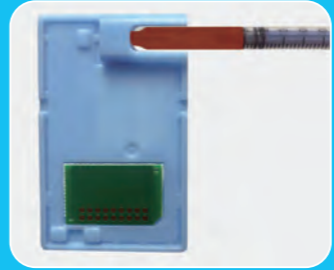
APPLICATION SCENARIOS



OPERATION

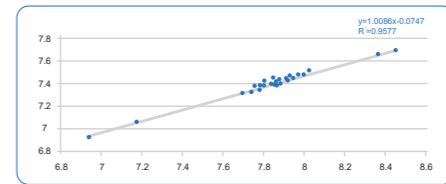


COMPONENTS



Test Card

- Sample Type: Whole Blood
- Sample Volume: 80ul
- Reading Time: 30s
- Suitable for Syringe and Capillary
- Good correlation to reference method




Reagent Pack

- Stability and effectivity for 12 months
- Shelf life: Up to 60 days after installation



Quality control

- Internal electronic QC
- External electronic simulated QC card
- Three levels liquid quality control